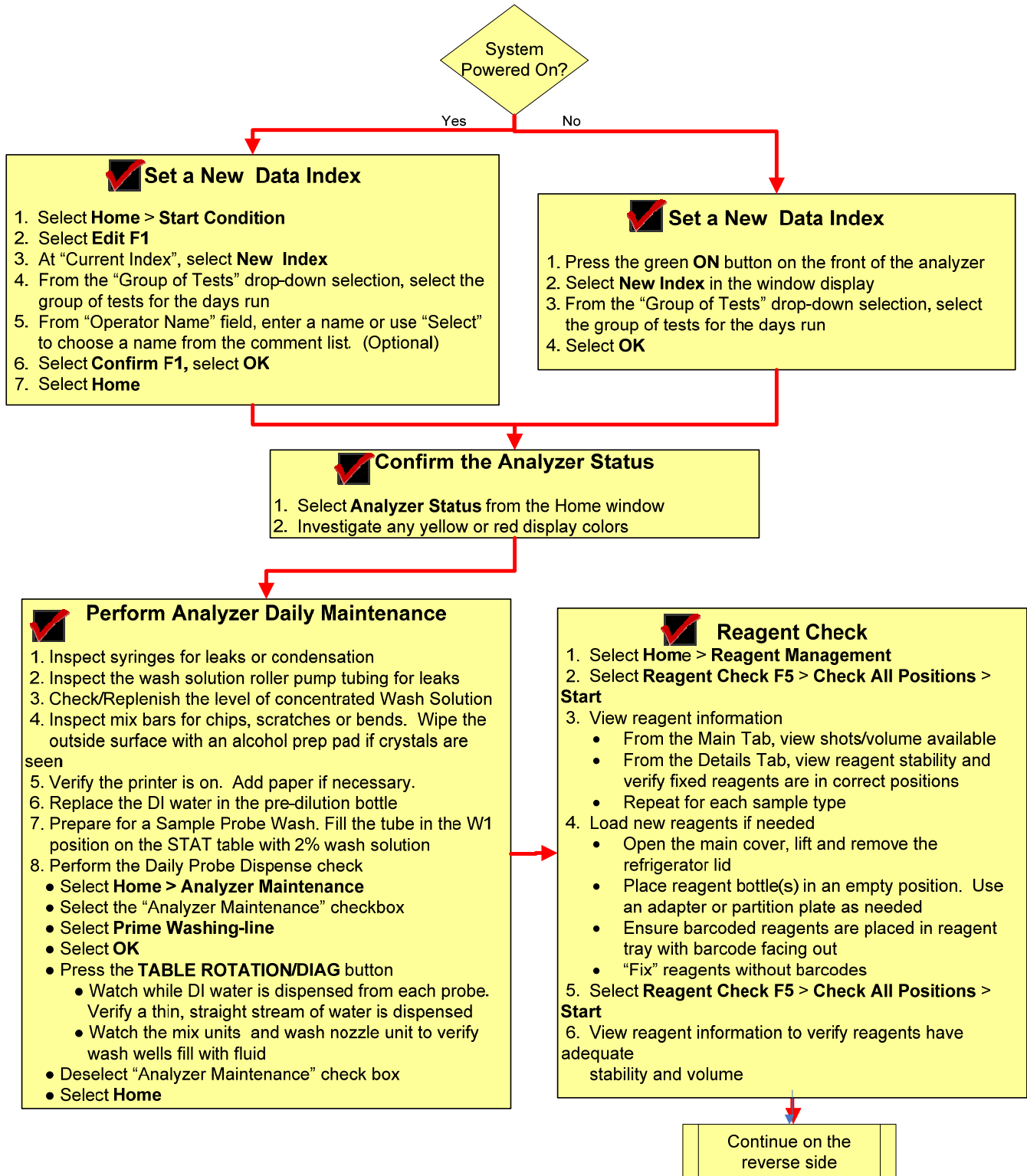


# AU480 Daily Start Up



## AU480 Daily Start Up, continued

### ISE Start Up (as required)

1. Verify the ISE reagents are in date (90 day open stability) and have adequate volume
2. Load reagents, as needed and prime
3. Check the ISE buffer syringe for leaks/condensation
3. If ISE clean is performed as part of an End Process, proceed to Step 4. If 24 hour/day facility, perform an ISE clean
  - Select **Home > Analyzer Maintenance > ISE Maintenance**
  - Place a cup with 1.0 mL ISE Cleaning Solution in the "CLEAN" position on Stat table and close lid.
  - Select **Cleaning F5 > OK**
  - Select the "ISE Maintenance" check box
  - Select **Total Prime, OK**. Press the **TABLE ROTATION/DIAG** button
  - Deselect "ISE Maintenance" button,
  - select **Home**

### ISE Calibration (as required)

1. Calibrate the ISE
  - Select **Home > Analyzer Maintenance > ISE Maintenance**
  - Select the **Calibration** tab
  - Load serum and/or urine high and low standards on the Stat table in the labeled positions (S-H, S-L, U-H, U-L). Press the **TABLE ROTATION/DIAG** button if needed to rotate the table
  - Select Serum Start, Urine Start or Serum/Urine Start
  - Select **OK**
  - When the ISE calibration is done, verify Slope & MID Solution factor results are in range for sample types calibrated
2. Select **Home**

### Perform RB/Calibrations

1. Select **Home > Rack Requisition Sample > Calibration**
2. Select the sample type requiring calibration from the Type drop-down menu.  
Note: the instrument will auto requisition required RB and Calibrations. Select **Start Entry F1** to make changes. Repeat for each sample type. Select **Exit F2**
3. Select **Display Cup Set F5**. Scroll down to view additional racks
4. Pour the solutions identified on the **Display CAL Racks** screen in appropriate racks
5. Select **Close**
6. Load the racks on the rack supply belt. Always load the blue rack followed by the yellow rack
7. Select **Start**

### Perform Quality Control

1. Select **Home > Rack Requisition Sample > QC**
2. Select the sample type requiring QC from the Type drop-down menu. Note: QC is auto requisitioned based on the default QC profile defined. Select **Start Entry F1** to make changes. Repeat for each sample type. Select **Exit F2**
3. Select **Display QC Set F6**. Scroll down to view additional racks
4. Pour the solutions identified on the **Display QC Racks** screen in appropriate racks
5. Select **Close**
6. Load the racks on the rack supply belt.

Select **Start**

Review the printed reports to verify that all RB/Calibrations/QC meet your laboratory requirements.