

AU480 Monthly Maintenance

Step	Action
1	Clean the Sample Probe, Reagent Probe and the Mix Bar Wash Wells
2	Clean the Wash Nozzle Unit, Check the Tube Mounting Joints and Clean the DI Water Tank, DI Filter and Sample Probe Filter

For Training Purposes Only

These job aids are shortened versions of the procedures found in the source below. The procedures are listed in the order to perform them in the most efficient manner. Where it is possible, procedures have been combined for efficiency. Information in the job aid is correct as of the date published. Verify you have the correct information.

Source: AU480[®] Chemistry Analyzer Users Guide Vol. 2
PN ZM0480V2 (November 2009)

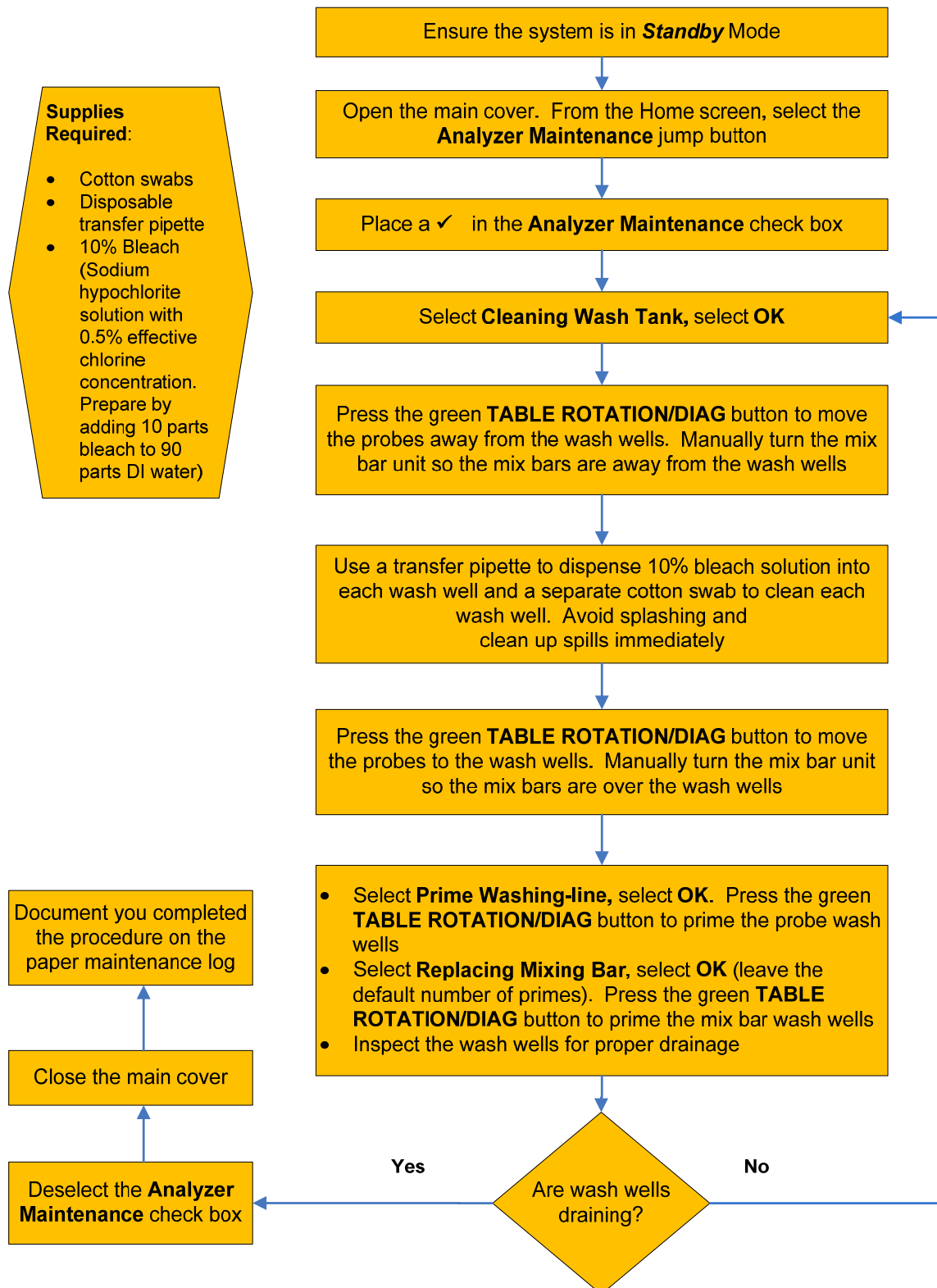
Document Disclaimers

Document Disclaimers	<p>This document is not intended to replace the information in your User's Guide, Quick Response Guide or other product documentation.</p> <p>Information in the User's Guide and Quick Response Guide supersedes information in any other manual.</p>
Warnings and Precautions	<p>Read all product manuals and consult with Beckman Coulter trained personnel before attempting to operate the instrument.</p> <p>Beckman Coulter, Inc. urges its customers and employees to comply with all national health and safety standards such as the use of barrier protection. This may include but is not limited to, protective eyewear, gloves, suitable laboratory attire when operating or maintaining this or any other automated laboratory equipment.</p>
Intention for Use	<p>This document is not intended to replace the information in your Instrument Instructions for Use Manual (IFU), Users Guide and Quick Response Guide. Information in the User's Guide supersedes information in any other manual.</p>
Revision Status	<p>Rev. A (March 2013) Software version 1.71</p>
Trademarks	<p>AU480[®] Chemistry Analyzer</p>

Clean the Sample Probe, Reagent Probe, and Mix Bar Wash Wells

Supplies Required:

- Cotton swabs
- Disposable transfer pipette
- 10% Bleach (Sodium hypochlorite solution with 0.5% effective chlorine concentration. Prepare by adding 10 parts bleach to 90 parts DI water)



Clean the Wash Nozzle Unit, Check the Tube Mounting Joints, Clean the DI Water Tank, DI Water and Sample Probe Filters

Ensure the system is in **Standby Mode**

Open the main cover. From the Home screen, select the **Analyzer Maintenance** jump button

Place a ✓ in the **Analyzer Maintenance** check box

Select **Replacing Wash Nozzle**, select **OK**. Press the green **TABLE ROTATION/DIAG** button to drain the liquid from the wash nozzle tubing

Deselect the **Analyzer Maintenance** check box, select **Home**. From the Home screen, select the **End Process** button

Open the front left door on the analyzer. Place a basin on the floor in front of the DI Water tank to catch spilled water. Disconnect the float sensor connector #868

Press the grey quick disconnect joint on the front of the tank, remove the tubing from the front of the tank

Pull the DI water tank forward and pull out the tubings from the top of the tank. Wrap the tubings with a dry clean lint-free cloth (1 tube has the DI water filter attached)

Pull the DI water tank out of the analyzer. Unscrew and remove the float sensor from the DI water tank, wipe the float sensor with DI water, then wipe the float sensor dry with a dry clean lint free cloth. Install the float sensor in the spare DI water tank containing 5 L of DI water

Discard the DI water from the tank you removed from the analyzer and rinse the tank with the 20% bleach solution. Rinse the tank thoroughly with DI water and allow to dry

Locate the filter on the DI water supply tubing removed the tank. Position the tubing over the basin and unscrew the filter case, remove the filter and allow the water to drip

Always drain the fluid from the wash nozzle before removing the tubing to avoid spills in the cuvette wheel

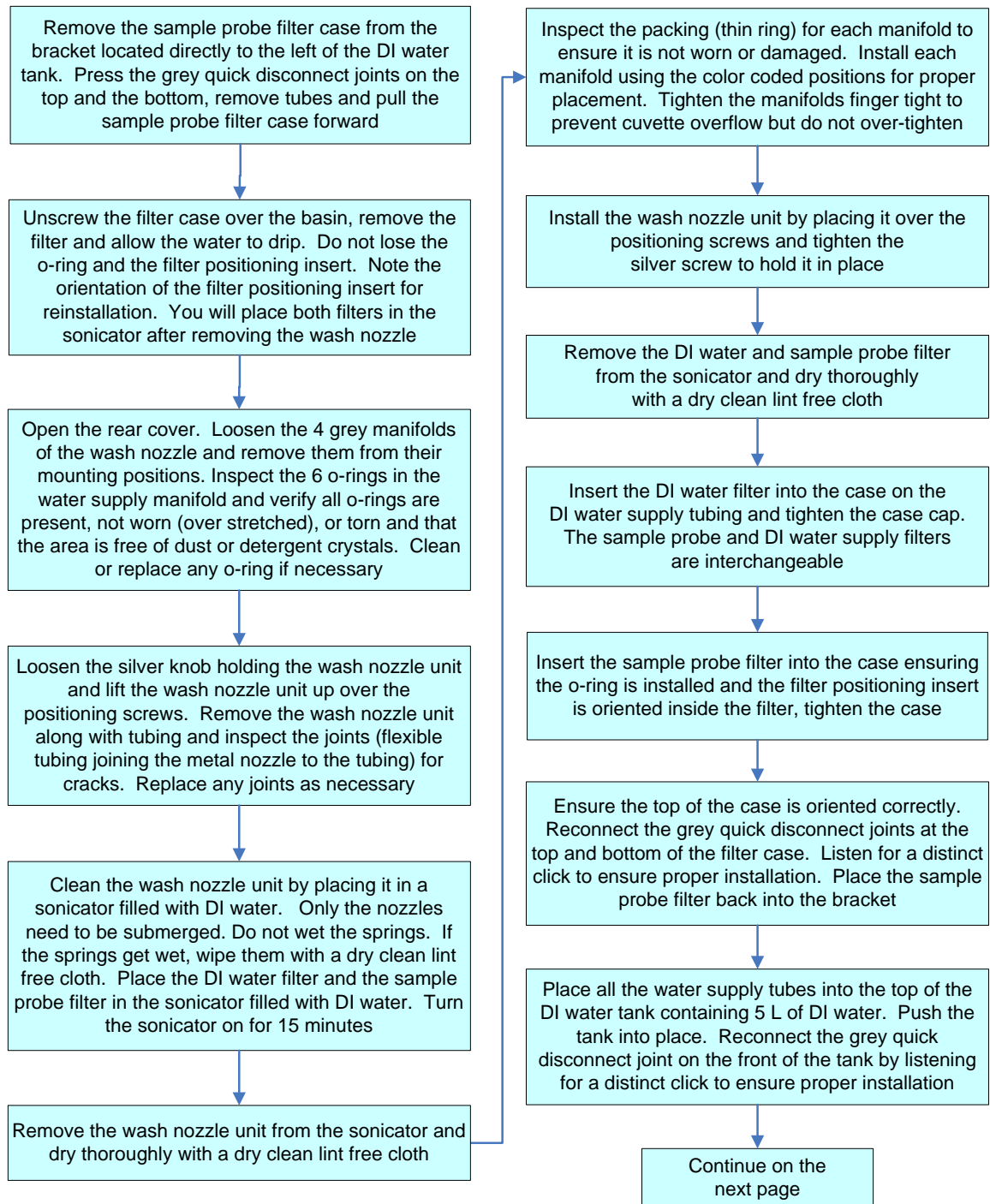
Be sure to remove the float sensor connector to prevent water from pouring out of the DI water tubing

- Supplies Required:**
- Dry clean lint free cloth
 - Basin
 - 20% Bleach (Sodium hypochlorite solution with 0.5% effective chlorine concentration. Prepare by adding 20 parts bleach to 80 parts DI water)
 - DI water tank filled with 5 L of DI water
 - Sonicator with DI water

Note: A sonicator is recommended for cleaning the nozzles but if one is not available, clean the nozzles with the supplied stylet and DI water

Continue on the next page

**Clean the Wash Nozzle Unit, Check the Tube Mounting Joints,
Clean the DI Water Tank, DI Water and Sample Probe Filters** continued page 2



**Clean the Wash Nozzle Unit, Check the Tube Mounting Joints,
Clean the DI Water Tank, DI Water and Sample Probe Filters** continued page 3

