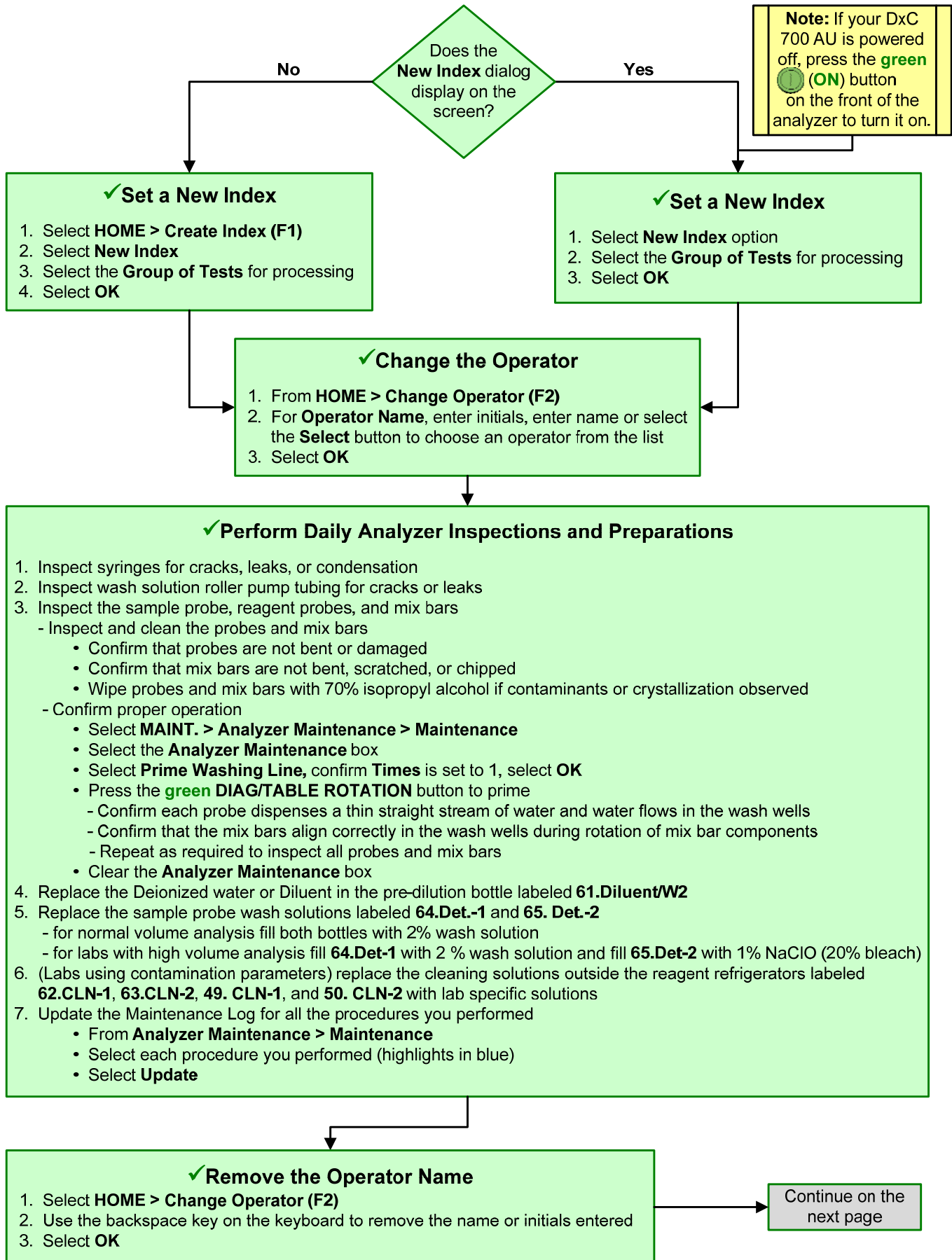


# DxC 700 AU Daily Startup without ISE



# DxC 700 AU Daily Startup without ISE, continued

## ✓ Monitor the Reagent Status

1. Select **REAGENT > Reagent Management > Details**  
Confirm the reagents meet the daily requirements set for your lab.  
For each sample type processed in your lab:
  - Review the **Number of Tests** column
  - Review the **Onboard Remaining** column
  - Review the **Expiration** column
2. Replace and/or add reagent bottles based on volume and expiration criteria for your lab
  - Lift and remove the reagent refrigerator covers
  - Remove required reagent bottles
  - Place new reagents bottles into available positions and secure with partitions and adapters as needed
  - Place non bar coded reagents bottles into fixed positions assigned in the **Details** tab
  - Replace the reagent refrigerator covers
3. Perform a reagent check
  - Select **Reagent Check (F5)**
  - Select **Check All Positions**
  - Select **Start**
4. View the **Main** and **Details** tabs to confirm status of onboard reagents meet the daily requirements for your lab

## ✓ Inspect the Analyzer Status

1. Select **HOME** (Analyzer Status)
2. Confirm that system components are within acceptable limits (shaded green)
3. Investigate any yellow or red conditions

## ✓ Perform Analyzer Calibration

1. Select **TEST > Rack (Calibration)**
2. Verify automatic calibration order is correct. Selected tests display in blue. Select **Type** to view all sample types in use
3. Select **Display Cup Set (F6)** to display the required reagent blank and calibrators. Use the scroll to view all racks
4. Pour the reagent blank and calibrators in appropriate bar code labeled containers
5. Load the reagent blank and calibrator(s) in the blue and yellow rack(s) according to the list, select **Close** when done
6. Place the racks on the rack load area with the blue rack first, followed by yellow rack(s), select **Start** to begin processing

## ✓ Perform Quality Control

1. Select **TEST > Rack (QC)**
2. Verify the automatic (default) QC order is correct. Selected tests display in blue. Select **Type** to view all sample types in use
3. Select **Display QC Set (F7)** to display the required QC samples. Use the scroll to view all racks
4. Pour the QC in appropriate bar code labeled containers
5. Load the control samples in the green racks according to the list, select **Close** when done
6. Place the racks on the rack load area, select **Start** to process the controls

## ✓ Review RB/CAL/QC Results

1. Review the reagent blank, calibration, and QC reports for flags. Take appropriate actions based on flags
2. Verify reagent blank and calibration meet lab requirements. **MENU > Calibration > Calibration Monitor > Status**, select **Reagent Blank** or **Calibration** column for desired test
3. Verify QC results meet lab requirements. **QC > Main** tab (all tests are selected by default) > **Chart View**. Review QC test results as required