

DxC Integrated Workstation Daily Start Up



For Training Purposes Only

These job aids are shortened versions of procedures found in the references below. Information in the job aid is correct as of the date published. Verify you have the correct information.

References:

- UniCel DxH Synchron Access Clinical System Integrated Workstations Instructions For Use PN A93829AC (March 2014)
- UniCel DxI Help System, DxI software v5.1

UniCel DxC Synchron Access Clinical System Integrated Workstations

WARNINGS AND PRECAUTIONS

Read all product manuals and consult with Beckman Coulter-trained personnel before attempting to operate the instrument.

Beckman Coulter, Inc. urges its customers and employees to comply with all national health and safety standards such as the use of barrier protection. This may include, but is not limited to, protective eyewear, gloves, suitable laboratory attire when operating or maintaining this or any other automated laboratory equipment.

INTENTION FOR USE

This document is not intended to replace the information in your Instrument Instructions for Use Manual (IFU) or Help System. Information in the Instructions for Use Manual or Help System supersedes information in any other manual.

REVISION STATUS

Rev. C (January 2015)

Based on DxC software version 5.4 and Dxl software version 5.1.

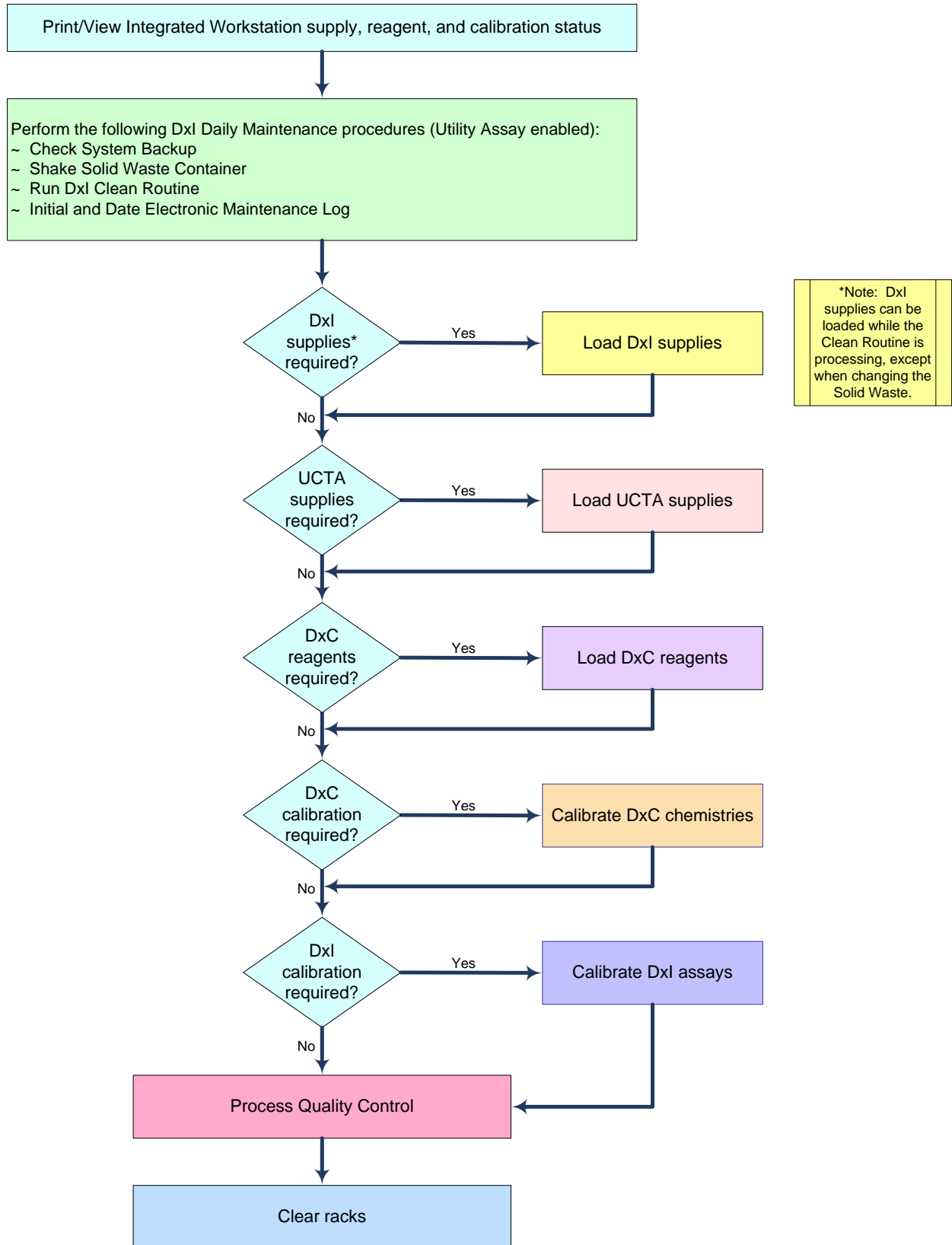
TRADEMARKS

Beckman Coulter, the stylized logo, Access, Dxl, Microtube, Synchron, and UniCel are trademarks of Beckman Coulter, Inc., and are registered with the USPTO. All other trademarks are the property of their respective owners.

Table of Contents

Component	Flowchart	Page
IW	DxC Integrated Workstation Daily Start Up	4
IW	View/Print Supply, Reagent and Calibration Status	5
Dxl	Check Backup	6
Dxl	Shake Solid Waste Container	7
Dxl	Run Clean Routine	8
Dxl	Add Reaction Vessels	9
Dxl	Change Liquid Waste Container	10
Dxl	Change Wash Buffer Container	11
Dxl	Change Substrate Bottle	12
Dxl	Change Solid Waste Container	13
Dxl	Load Reagent Pack	14
Dxl	Unload Reagent Pack	15
UCTA	Change Wash Buffer Container	16
UCTA	Change Auto-Gloss	17
DxC	Load MC Reagents	18
DxC	Load CC Reagents	19
DxC	Unload CC Reagents	20
DxC	Calibration	21
Dxl	Calibration	22
IW	Auto Generation of Control (QC)	23
IW	Manual Programming of Quality Control	24
IW	Clear Racks	25

DxC Integrated Workstation Daily Start Up



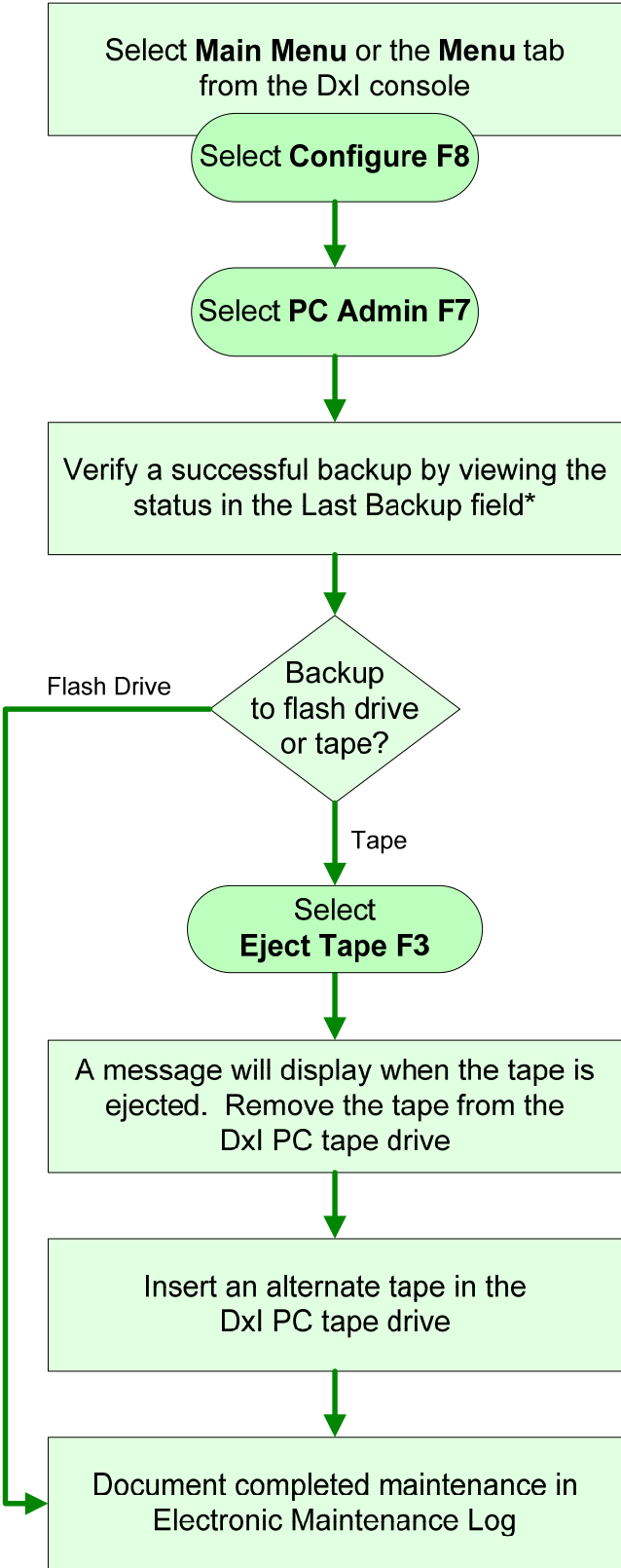
View/Print Supply, Reagent, and Calibration Status

Select **Rgts/Cal** from the
workstation console



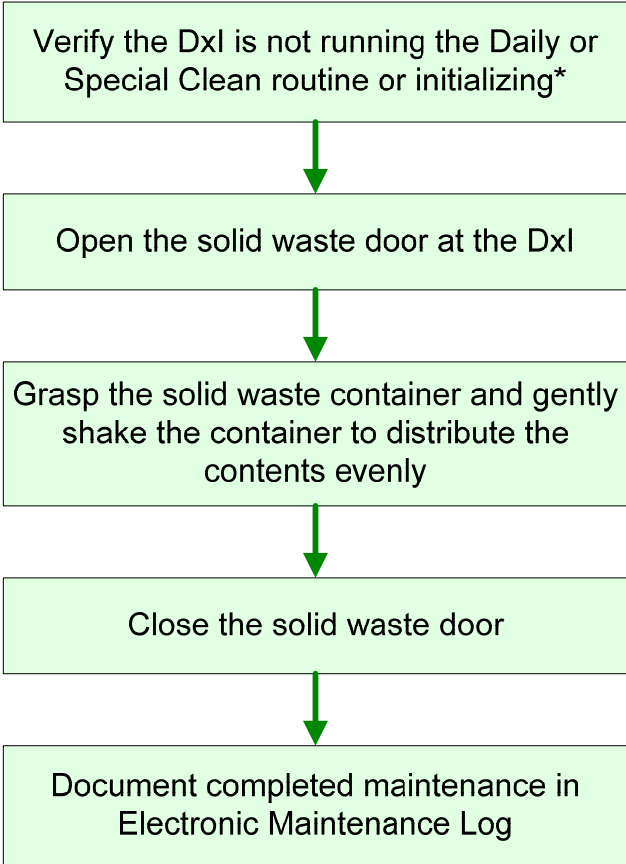
View all tabs and pages or select
Print F10

Check Dxl System Backup



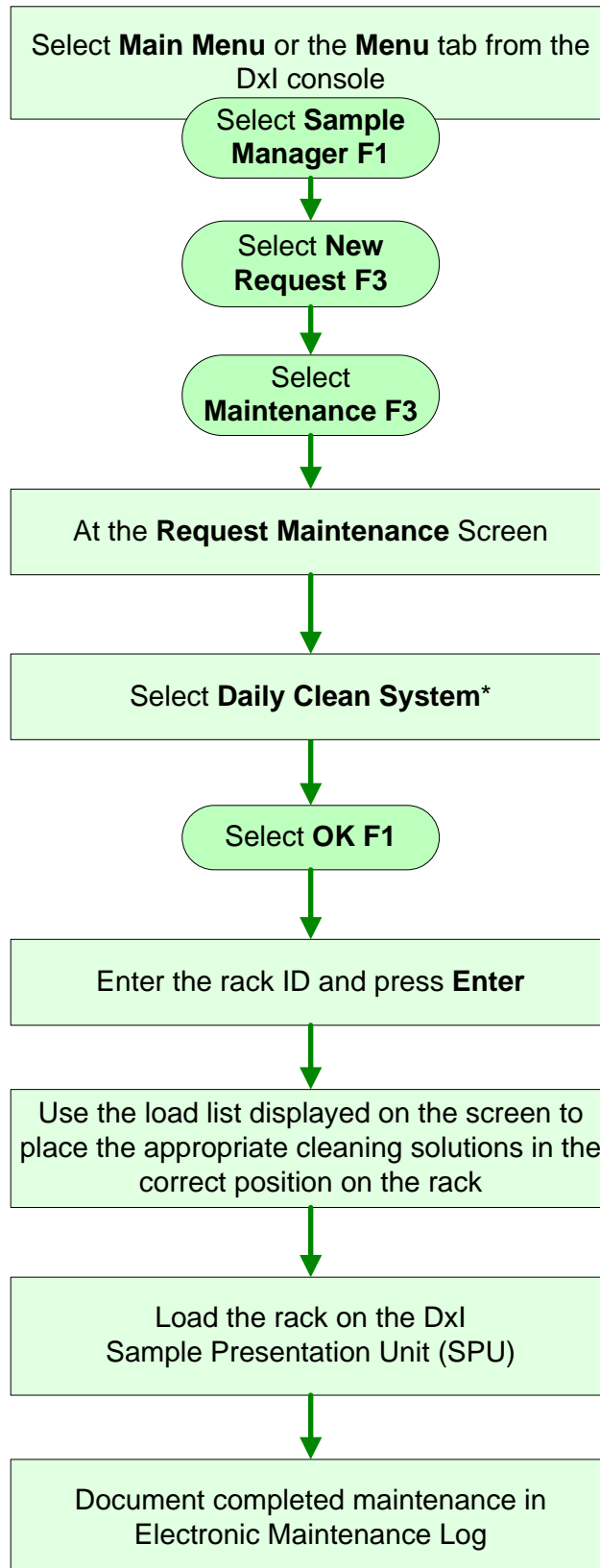
*Note: If the backup is not successful, perform an immediate backup or schedule a backup. The instructions for the procedures can be found in the Dxl Help System.

Shake the Dxl Solid Waste Container



*Caution: Opening the solid waste door during any of these procedures will place the Dxl in Not Ready

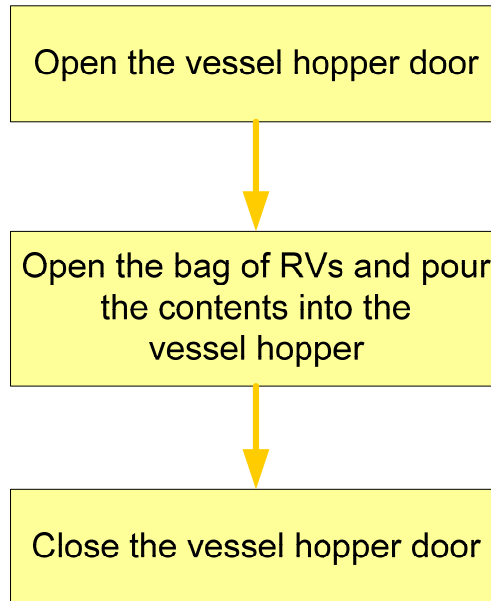
Process Daily Clean Routine



*If you run the B12 assay, perform the Special Clean in place of the Daily Clean. See the Dxl Help System for information about running the Special Clean

CAUTION
Citranox and Contrad 70 cleaning solutions may cause eye or skin irritation. See the MSDS for details

Add Reaction Vessels (RVs)



Change a Full Liquid Waste Container

Use supply status to determine which bulk liquid waste container(s) needs to be changed



Pull out the liquid waste drawer



Press the disconnect button on the full container to release the tubing



Remove the full container and replace it with an empty container



Connect the tubing to the empty container and close the drawer



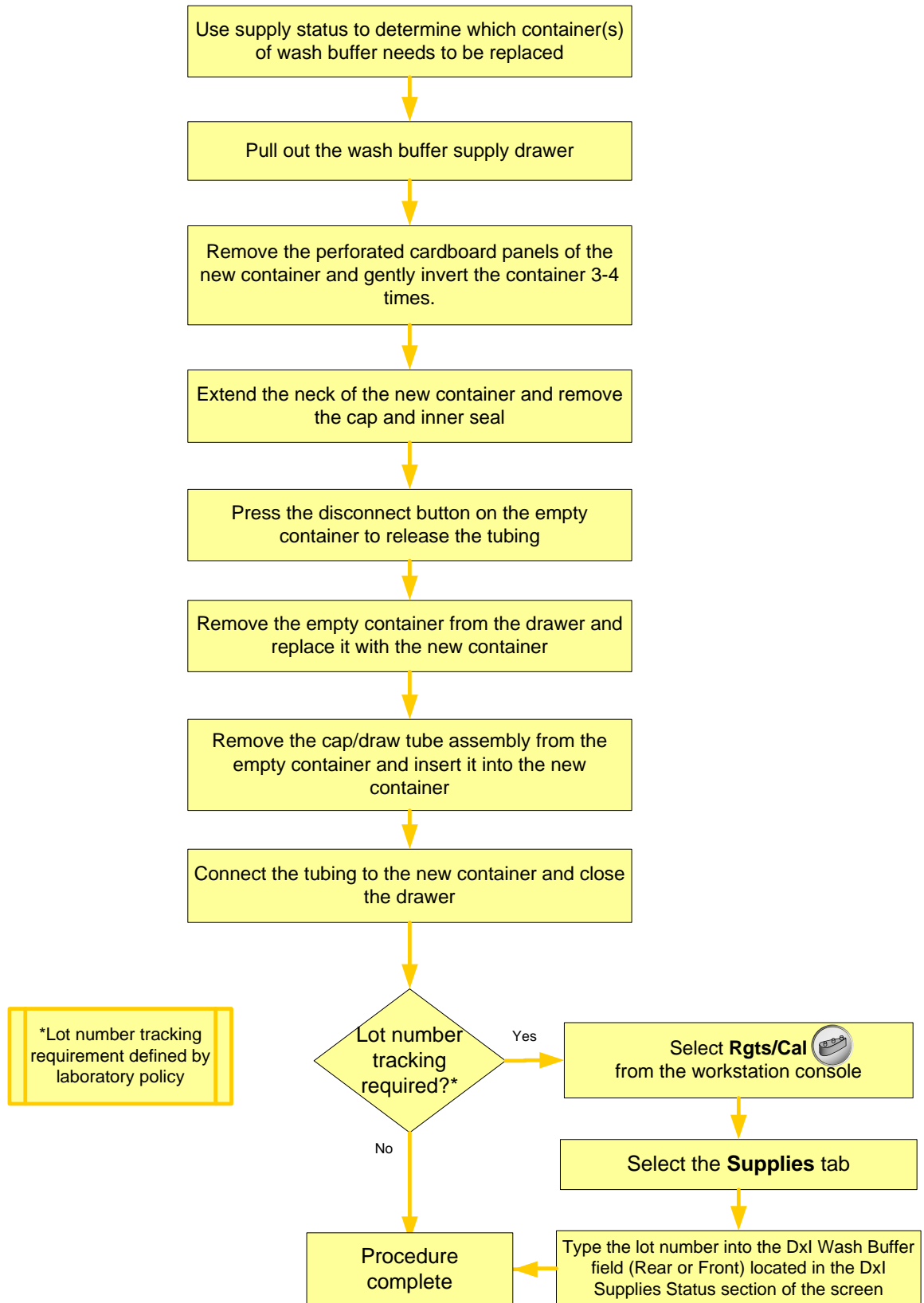
Decontaminate* the contents of the full container and dispose of the liquid waste



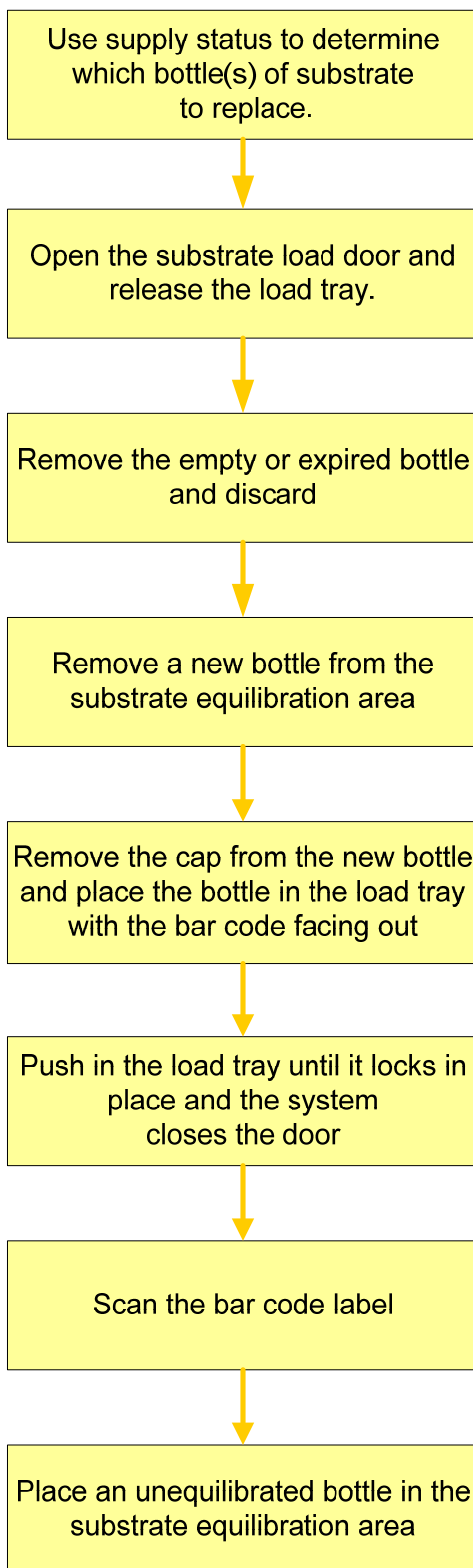
Rinse the container thoroughly and store it for future use

*Decontaminate liquid waste based on laboratory protocol

Change an Empty Dxl Wash Buffer Container



Change an Empty or Expired Substrate



Change a Full Solid Waste Container

Verify the Dxl is not running the Daily or Special Clean routine or initializing*

*Caution: Opening the solid waste door during any of these procedures will place the Dxl in Not Ready

Pull down on the solid waste door handle

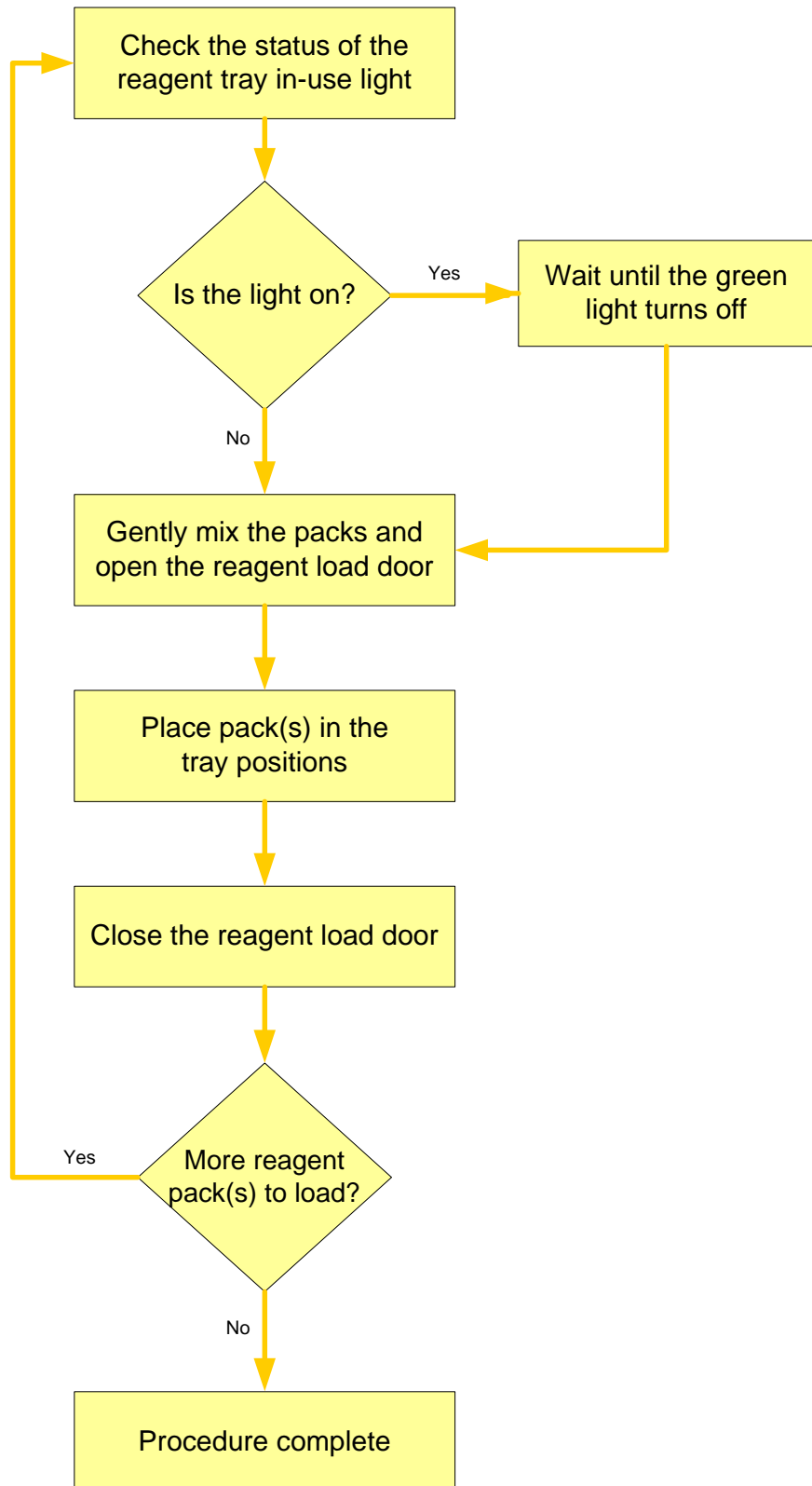
Slide the full container out of the storage area and seal the waste bag

Remove the full waste bag and insert a new bag into the container

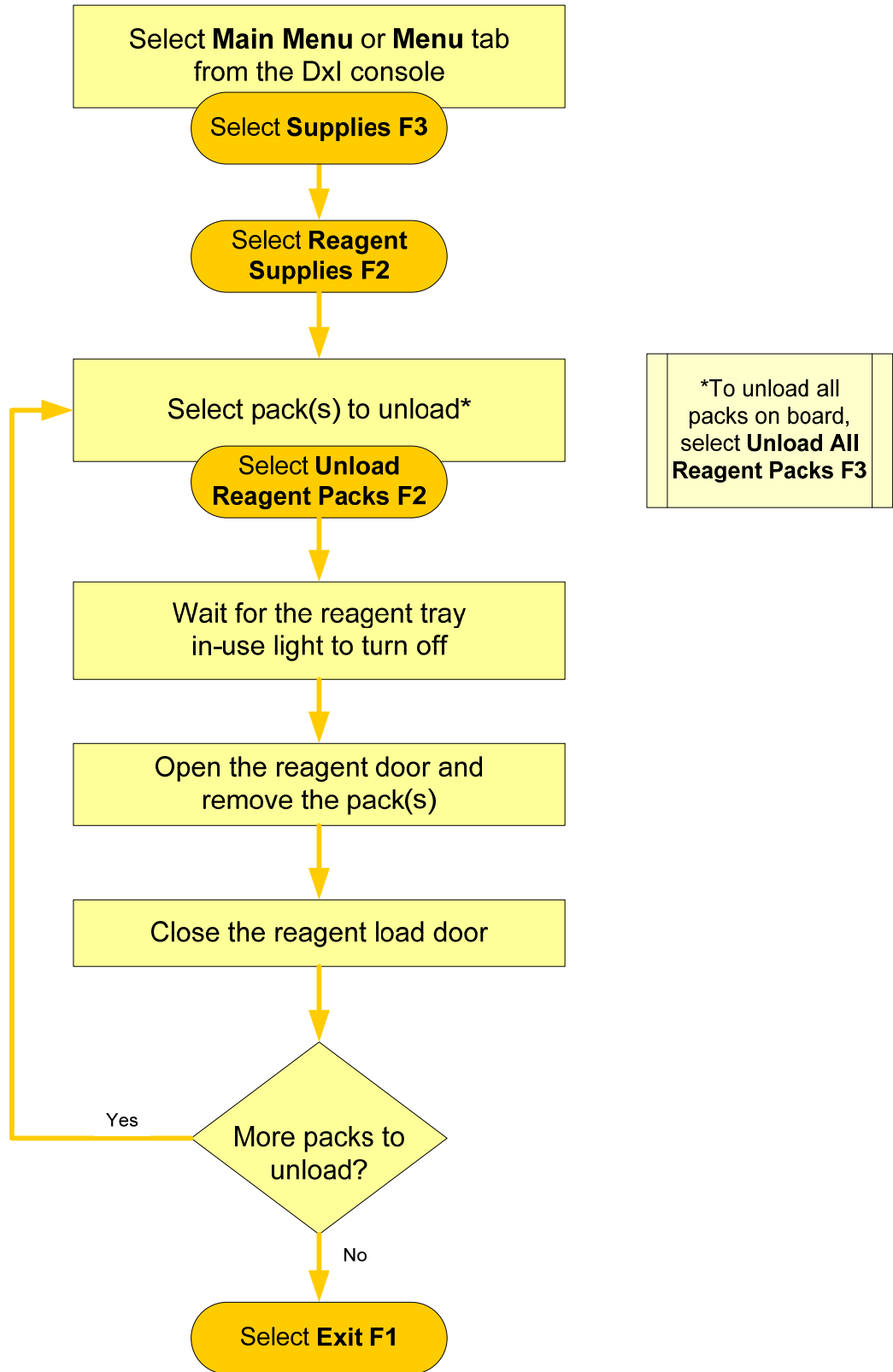
Slide the empty container and bag into the storage area

Press the green reset button and close the door

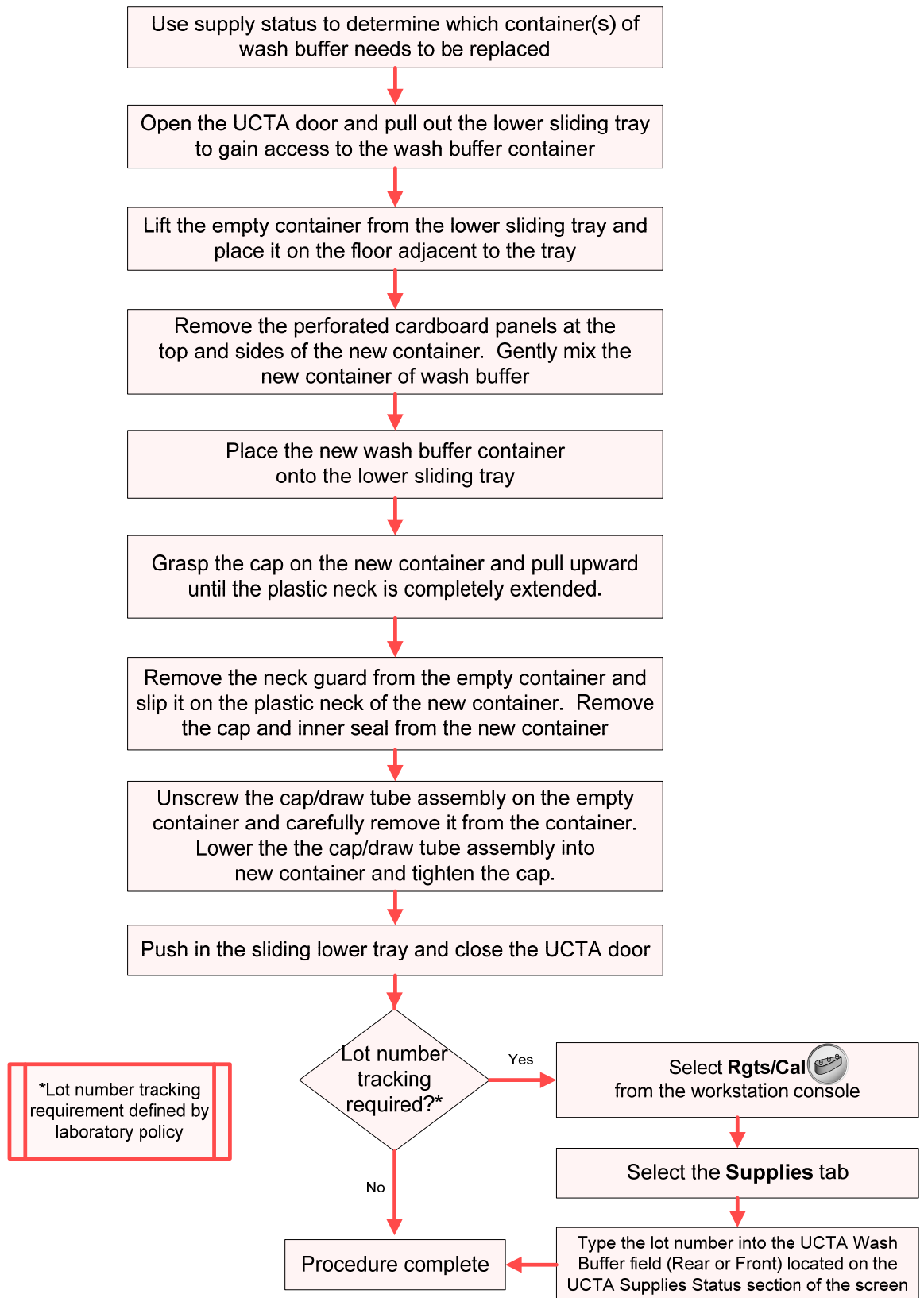
Load a Dxl Reagent Pack



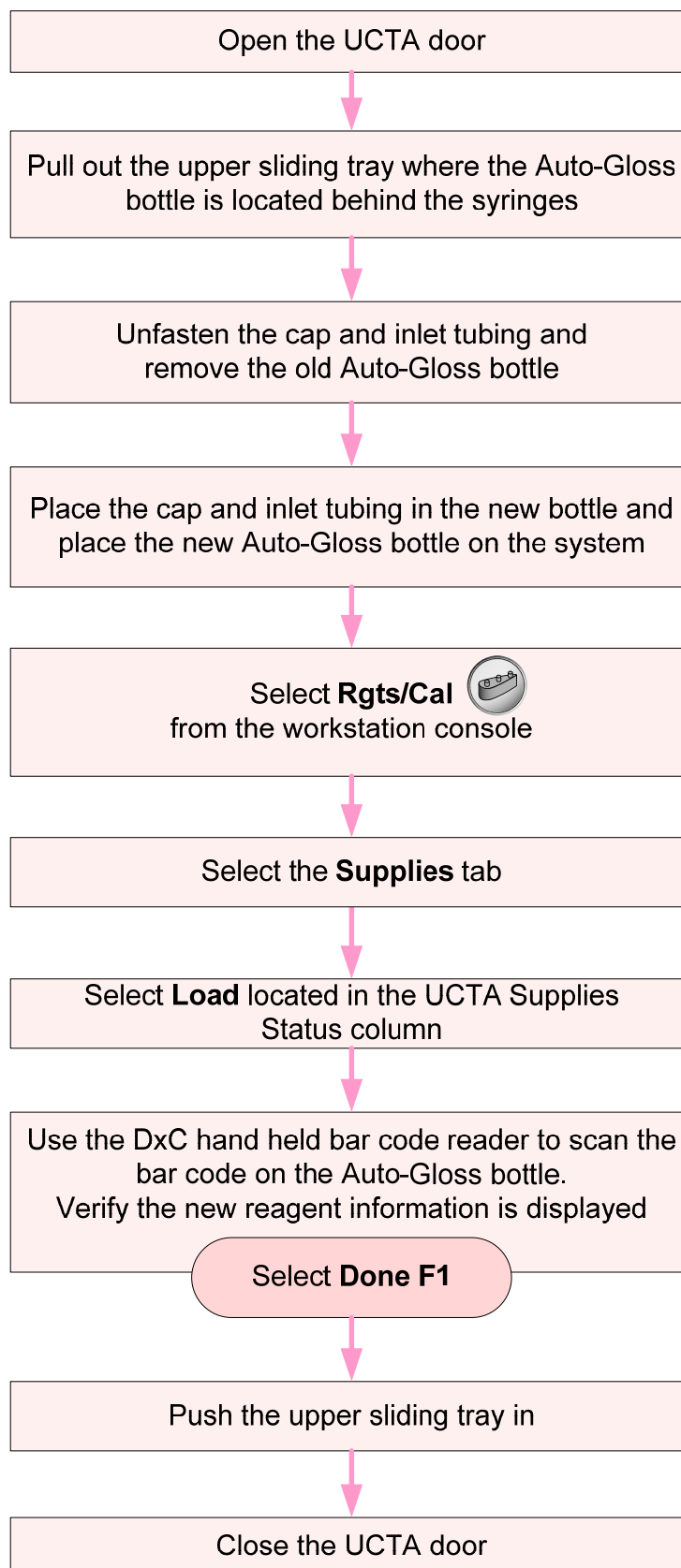
Unload a Dxl Reagent Pack



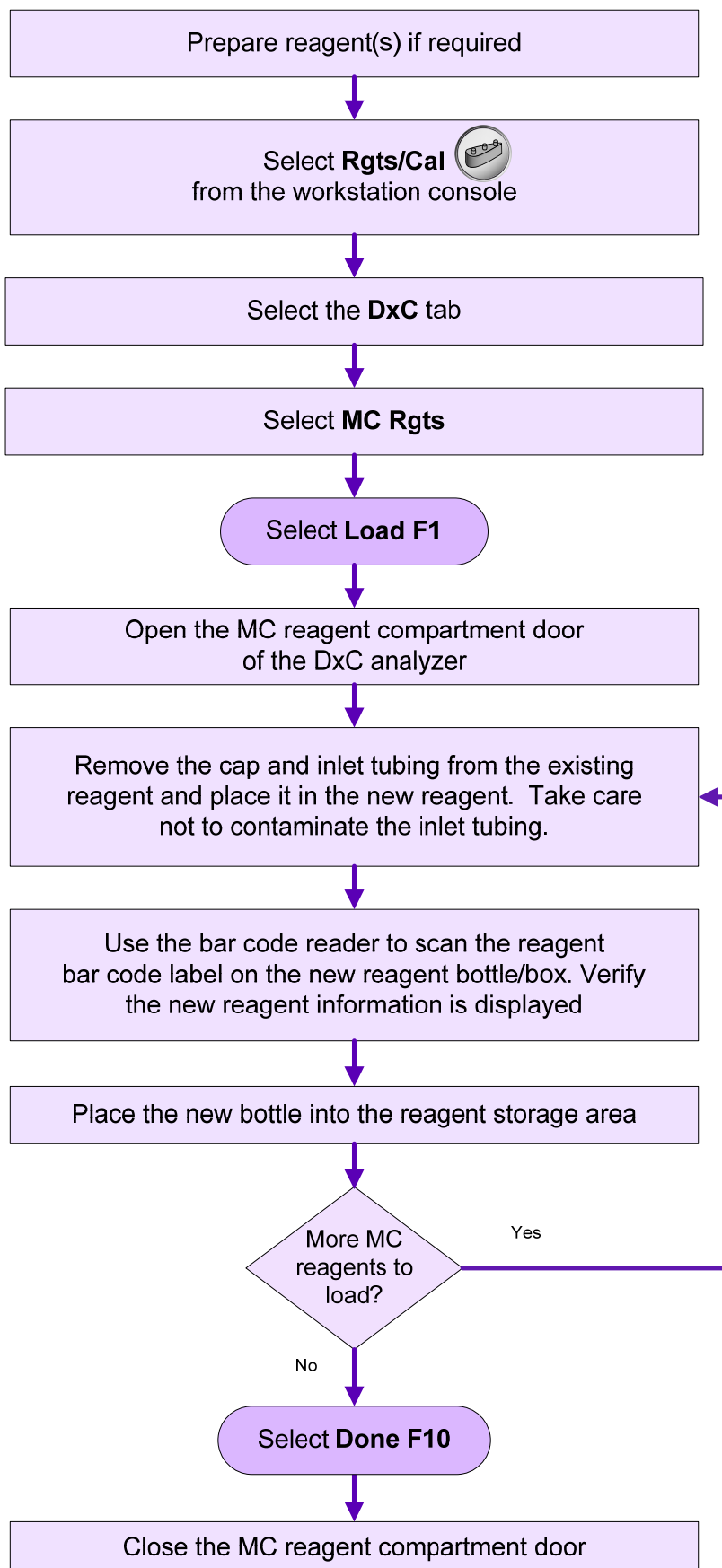
Change the UCTA Wash Buffer



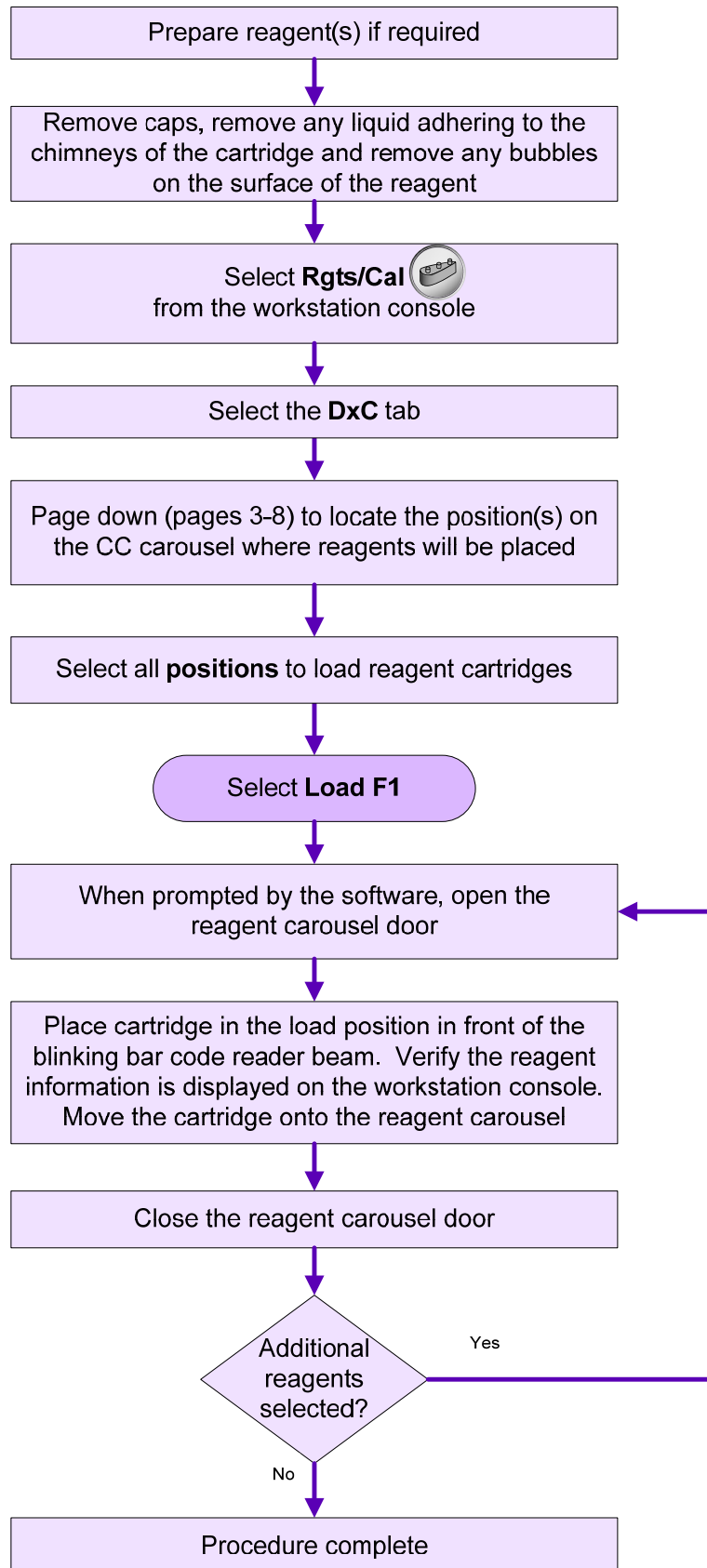
Change the UCTA Auto-Gloss



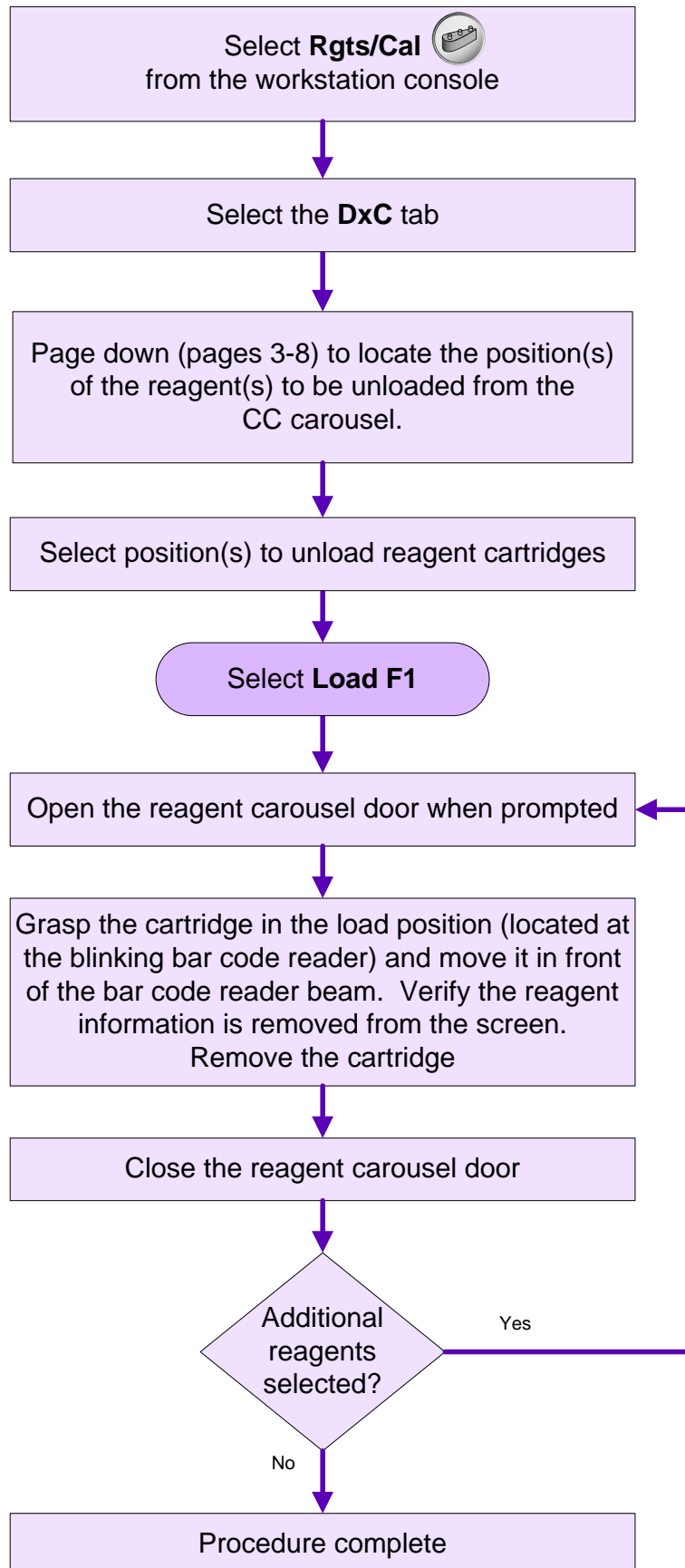
Load MC Reagents



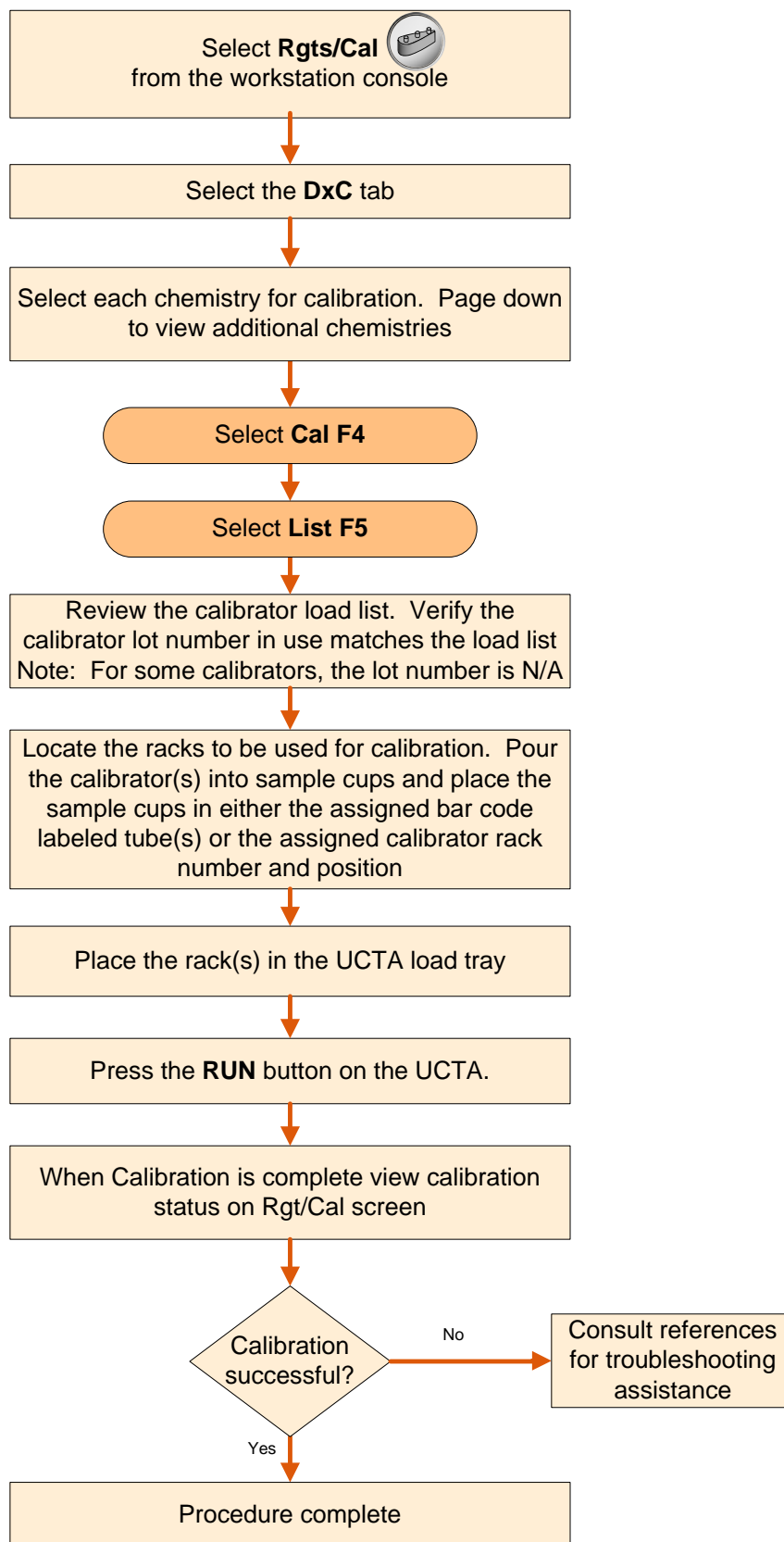
Load CC Reagents



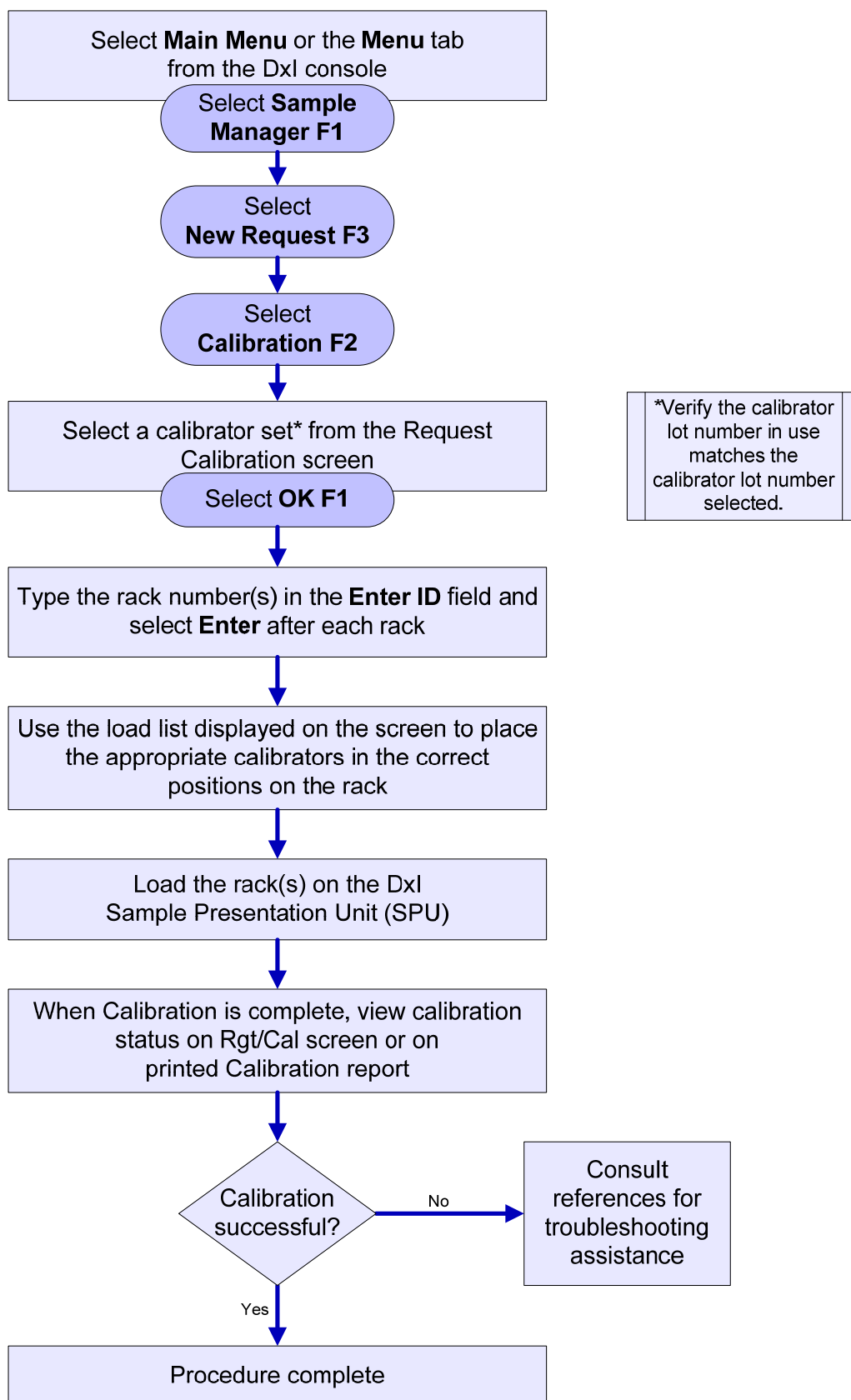
Unload CC Reagent



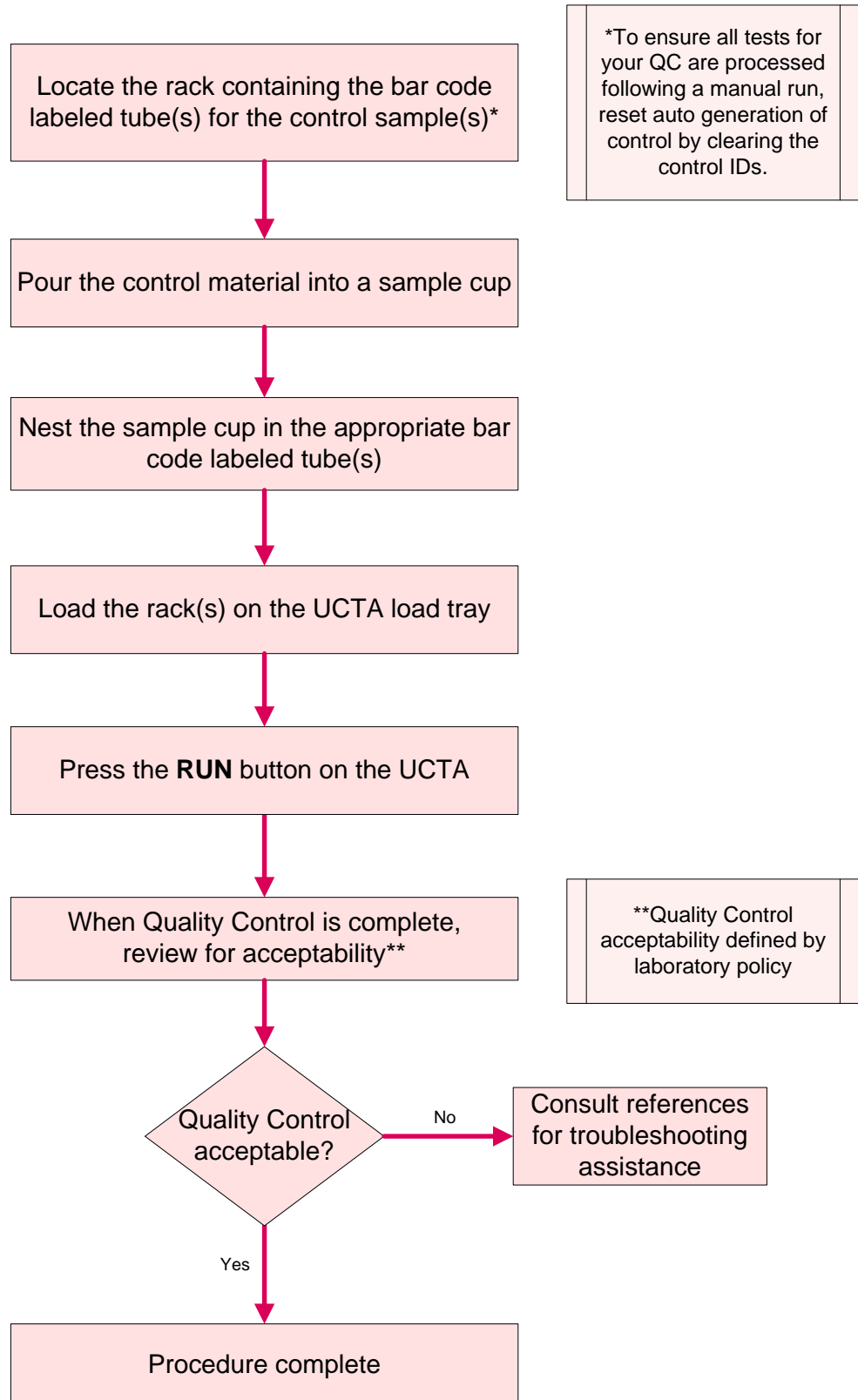
Calibrate DxC Chemistries



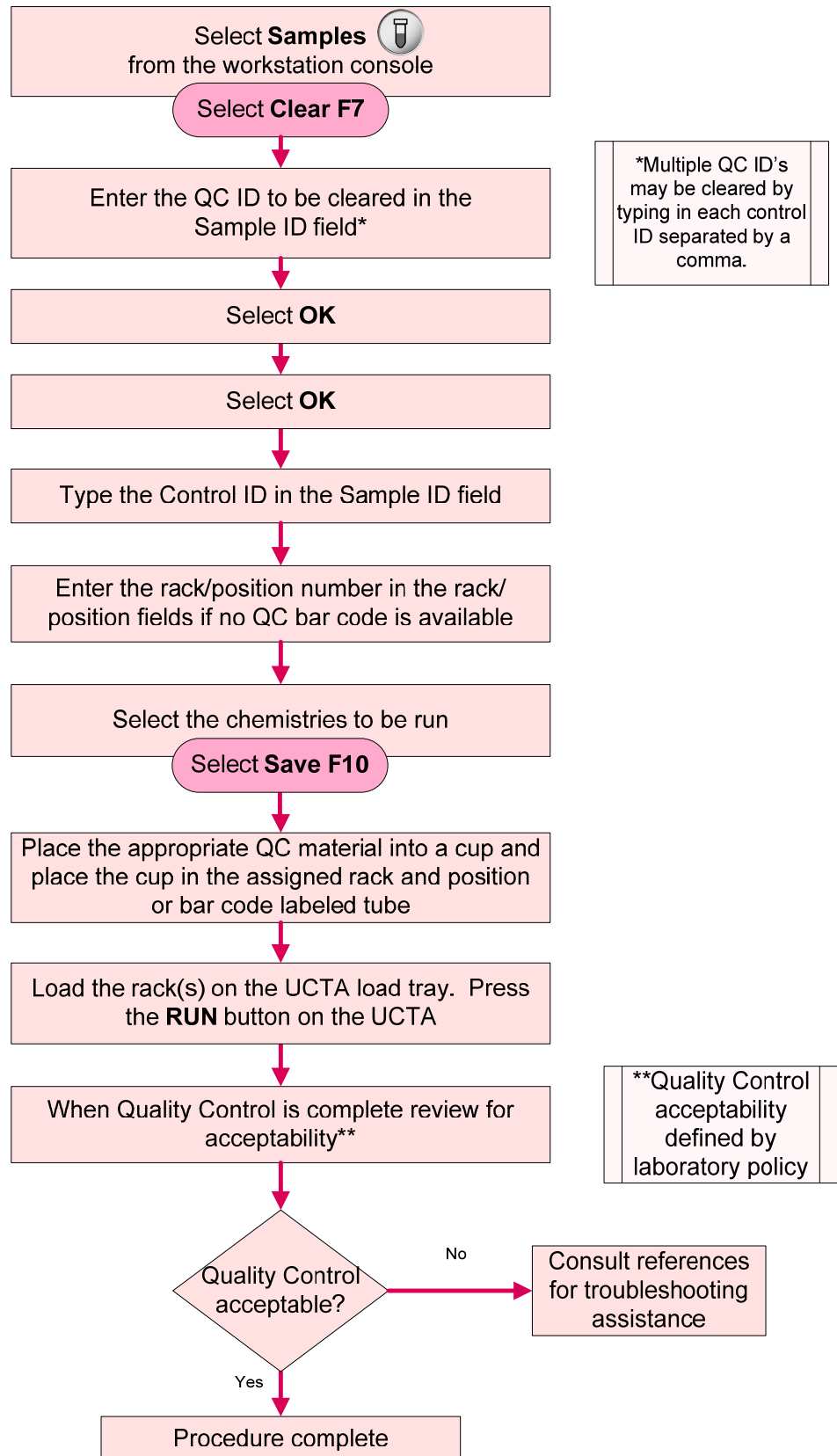
Calibrate Dxl Assays



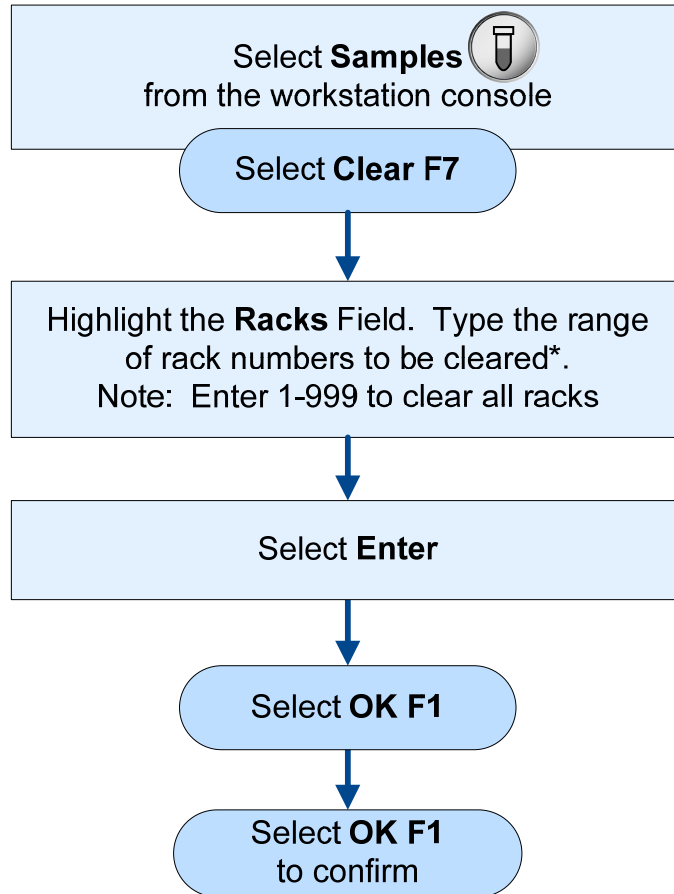
Process Quality Control using Auto Generation of Control



Program and Process Quality Control (QC) Manually



Clear Racks



*Calibrator rack assignments and racks in progress are not cleared with this step.