

## Power Link Troubleshooting Job Aid

<i>Job Aids</i>
<b>General Recovery</b>
<b>Alpha Codes</b>
<b>AU680 Connection Module Special Error Code Recovery</b>
<b>Dxl Connection Module Special Error Code Recovery</b>
<b>Jammed Sample Tube Carrier Recovery</b>

### **For Training Purposes Only**

These job aids are shortened versions of the procedures found in the sources below. Information in the job aid is correct as of the date published. Verify you have the correct information.

#### Source:

- Power Link Instructions for Use P/N B15239AA (August 2012)
- AU680 User's Guide P/N B04779AA (March 2011)
- AU680 Quick Response Guide P/N B06655AA (April 2011)
- Dxl Instructions for Use P/N 387261M (August 2011)

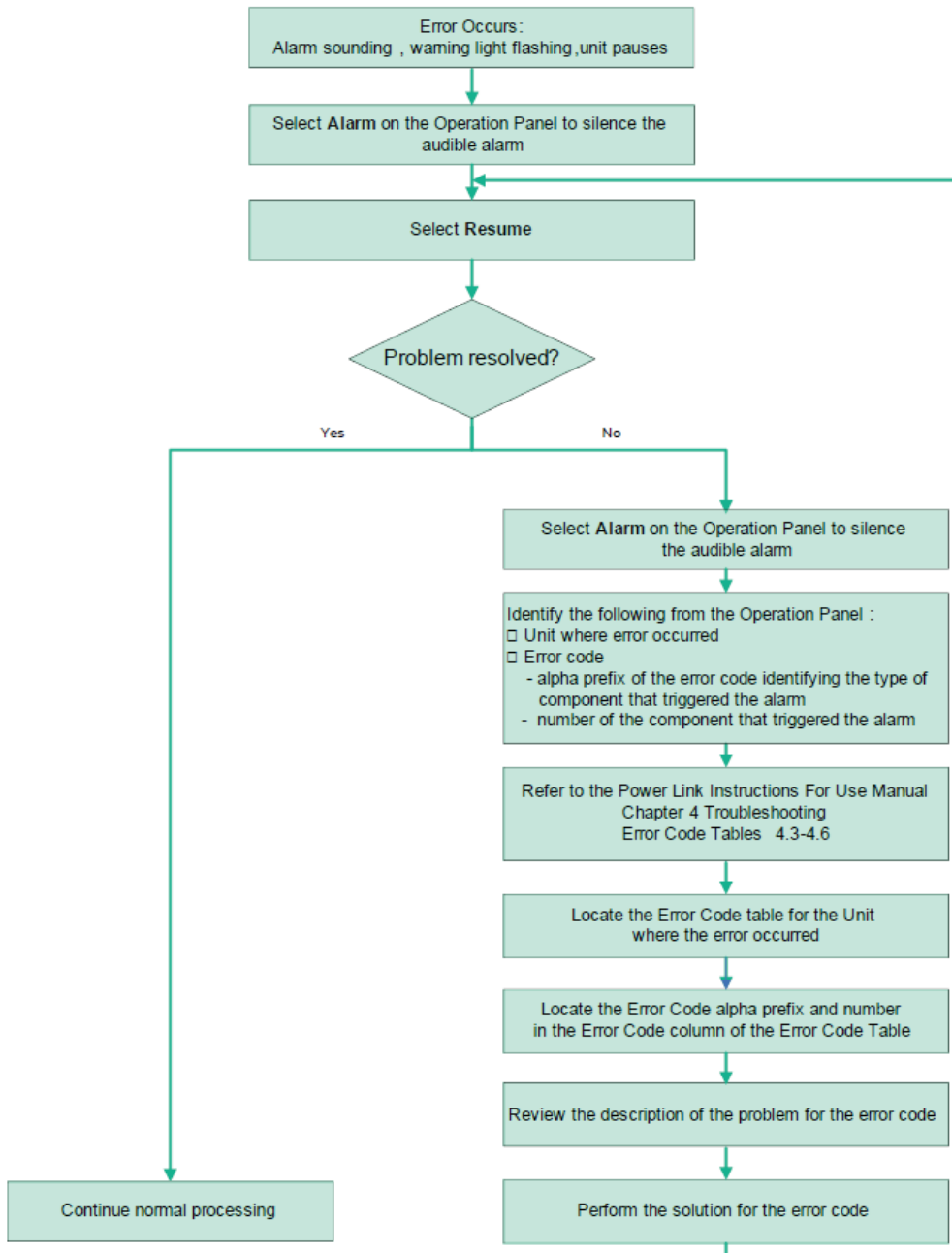
## Document Disclaimers

---

<b>Document Disclaimers</b>	<p>This document is not intended to replace the information in your AU680 User's Guide, AU680 Quick Response Guide, and Power Link Instructions for Use Manual, Dxl Instructions for Use Manual or Dxl Online help.</p> <p>Information in the AU680 User's Guide, Quick Response Guide, and Dxl Instructions for Use, Dxl Help system and Power Link Instructions for Use, supersedes information in any other manual.</p>
<b>Warnings and Precautions</b>	<p>Read all product manuals and consult with Beckman Coulter trained personnel before attempting to operate the instrument.</p> <p>Beckman Coulter, Inc. urges its customers and employees to comply with all national health and safety standards such as the use of barrier protection. This may include but is not limited to, protective eyewear, gloves, suitable laboratory attire when operating or maintaining this or any other automated laboratory equipment.</p>
<b>Intention for Use</b>	<p><b>This document is not intended to replace the information in your instrument Instructions for Use Manual (IFU), Users Guide and Quick Response Guide. Information in the User's Guide and Instructions for Use supersedes information in any other manual.</b></p>
<b>Revision Status</b>	<p>Rev. A (September, 2013) Software version Power Link 1.00-R03 Software version AU680 3.70 Software version Dxl 600 4.4 Software version Dxl 800 4.4</p>
<b>Trademarks</b>	<ul style="list-style-type: none"><li>• AU<sup>®</sup></li><li>• UniCel<sup>®</sup></li></ul> <p>All other trademarks are the property of their respective owners</p>

# General Recovery

Use the flowchart below to identify and resolve an error on the Power Link.

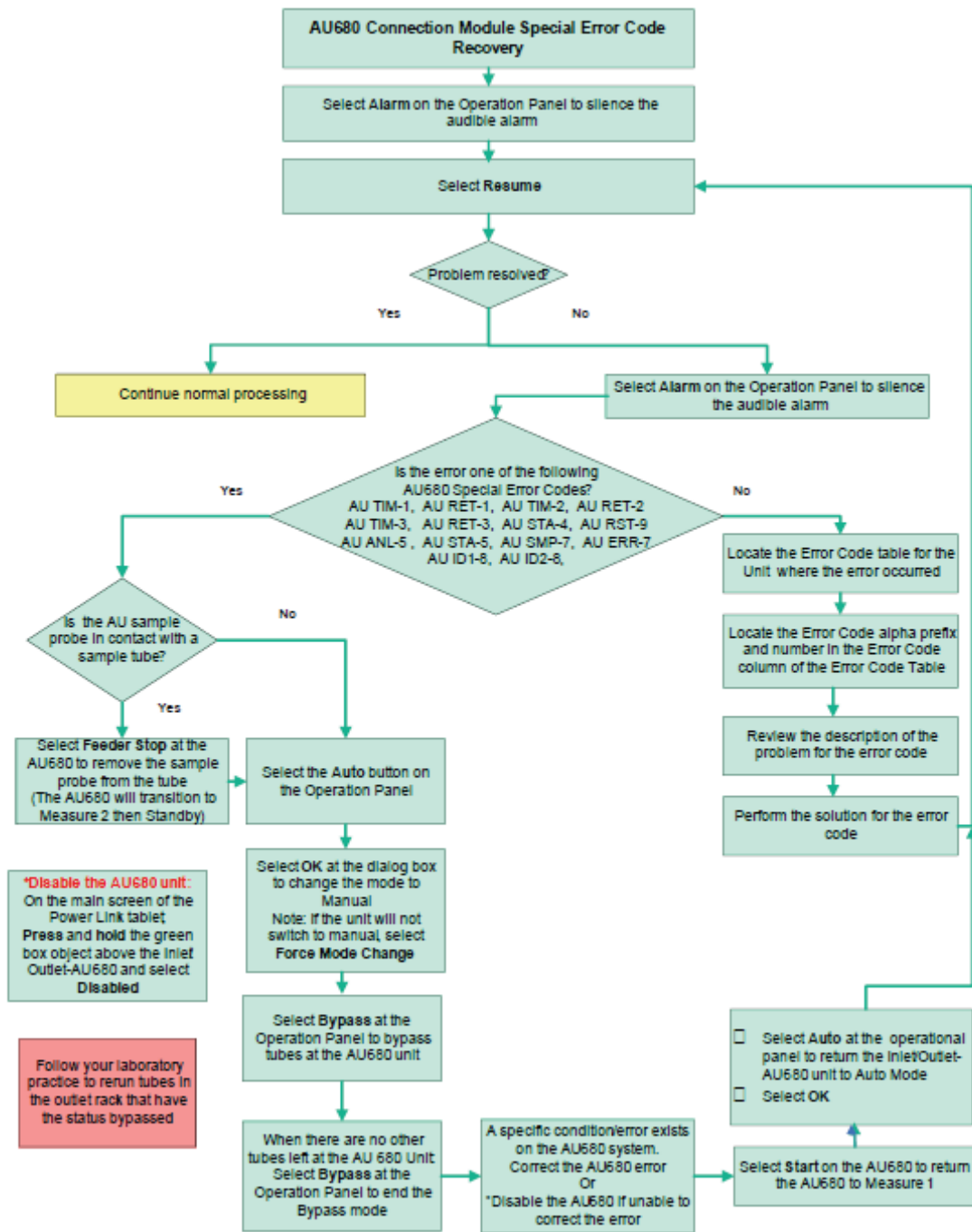


## Alpha Codes

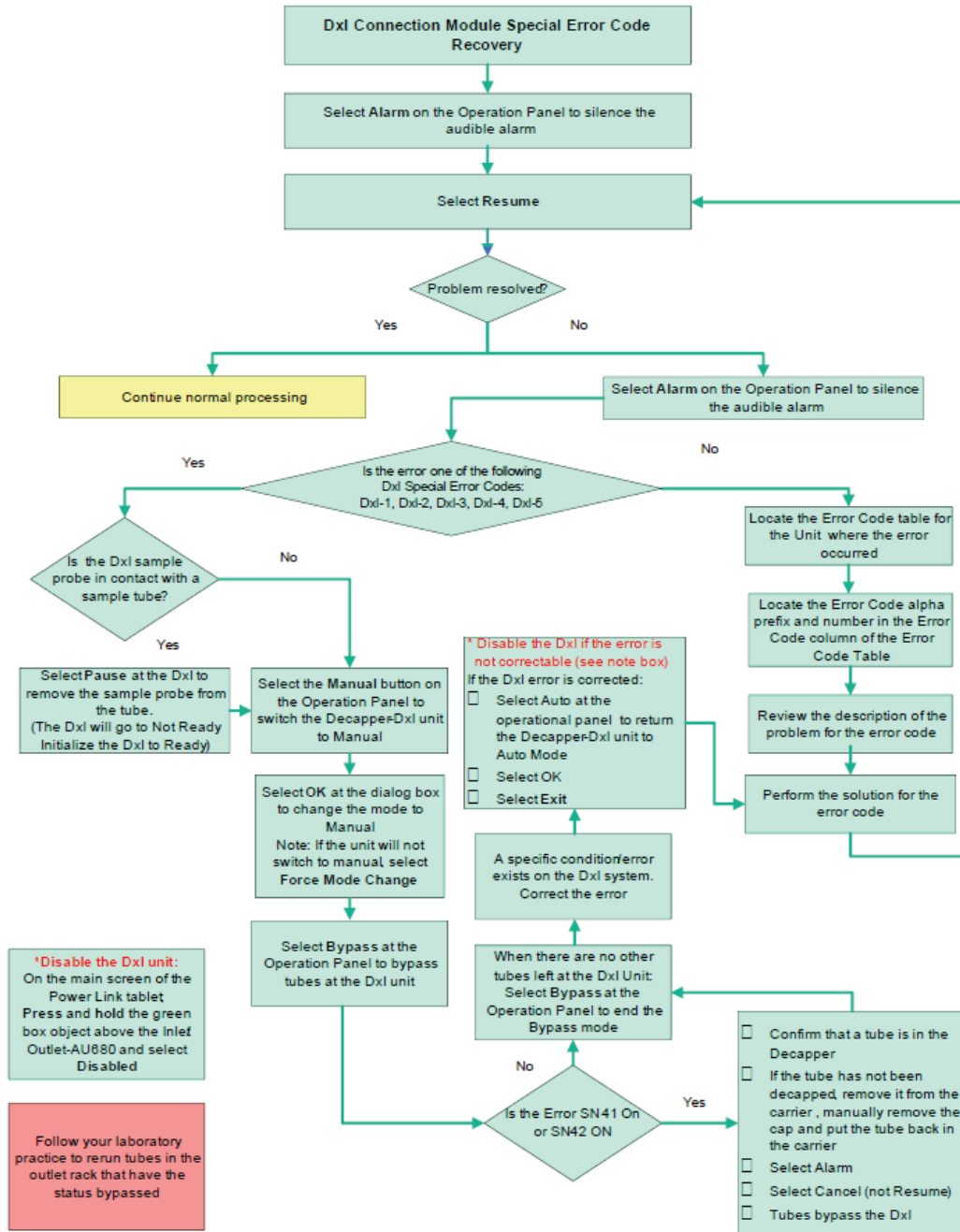
**Use the following table when evaluating alpha codes:**

<b>AS</b>	Sensor on the pneumatic device that confirms the position of a component such as the gripper, stoppers, gripper arm, etc.
<b>BR</b>	Barcode reader scans the tube's barcode ID to decide how to handle the tube at the following locations: <u>Inlet/Outlet Module:</u> BR01: Identifies Sample ID of tube on conveyor BR03: Identifies if AU680 tests are required BR04: Verifies Sample ID of tube before AU aspiration BR02: Verifies Sample ID of tube before transfer to Outlet <u>Decapper-Dxl Module:</u> BR01: Identifies if Dxl tests are required BR02: Verifies Sample ID of tube before Dxl aspiration
<b>PM</b>	Motor that controls the movement of a gripper arm (or transfer arm) assembly. PM errors can be caused by an obstruction along the way as the arm assembly moves, an improper movement, or by the motor itself.
<b>SL</b>	Pneumatic devices that use air to move an assembly or component: in and out, back and forth, or up and down. These devices move stoppers, tube grippers, decapper tube clamps, cap grippers, cap disposal, tube spinner rollers, tube pick up, etc.
<b>SN</b>	Sensor that detects rack, sample tube carrier, tube in the carrier, cap presence, or door closure.

# AU680 Connection Module Special Error Code Recovery



# Dxl Connection Module Special Error Code Recovery



## Jammed Sample Tube Carrier Recovery

